


SAGE GOLD INC.

Precious Metals In The Americas

Company Fact Sheet

WHY SAGE GOLD?

Symbol: **SGX**
Exchange:
TSX-V

- ❖ Highly experienced team in all areas of mining
- ❖ Focus on the active Beardmore- Geraldton Gold Camp in NW Ontario
- ❖ Golden Extension Discovery on Jacobus property directly northwest and on strike with Kodiak Exploration's Golden Mile Discovery
- ❖ Nine new GOLD Veins on Paint Lake

52 week Hi-Lo
\$0.41 - 0.04

Historical High
\$0.80
(10/22/2007)

Shares
Outstanding
176.9 Million

Market
Capitalization
\$13 Million

For Investor
Relations
Contact:

AGORACOM
Investor
Relations

email:
sgx@agoracom.com

Website:
www.sagegoldinc.com

Properties

JACOBUS, BEARDMORE – GOLDEN EXTENSION DISCOVERY

- 1+KM OF AGGREGATE STRIKE LENGTH OVER MULTIPLE GOLD BEARING VEINS
- DRILLING UNDERWAY IN JUNE 2009 TOTALING 3000 METRES
- GOLDEN EXTENSION AND GOLDEN MILE BELIEVED TO BE SAME SYSTEM
- HIGHLIGHT ASSAYS – 259.99 G AU/T, 136.5 G AU/T, 93.72 G AU/T

JACOBUS, BEARDMORE –COPPER, NICKEL

- HISTORICAL RESOURCE – 937,538 TONS AT 0.43% CU AND 0.41% NI

ONAMAN, BEARDMORE – GOLD, SILVER, COPPER, ZINC, LEAD

- NI 43-101 COMPLIANT RESOURCE ON LYNX ZONE ; INFERRED RESOURCE TO DATE
- 1,936,000 TONNES WITH AVG .GRADE OF 1.44% CU, 39.6 G AG/T , 0.58 G AU/T CONTAINING 61.3 MLBS COPPER, 2.24 MOZ.SILVER, 33,000 OZ. GOLD
- POTENTIAL TO EXPAND RESOURCE AND AMENABLE TO OPEN PIT MINING

PAINT LAKE –GOLD

- STRIPPING AND TRENCHING WITH REPORTED HIGH GRADE CHANNEL SAMPLES
- HIGHLIGHT ASSAYS - 23.09 G AU/T; 22.77 G AU/T
- ADJACENT TO ONTEX'S BROOKBANK GOLD DEPOSIT
- DRILLING ON NEW GOLD VEINS IN 2009

• KERRS, LAKE ABITIBI GOLD BELT, ONTARIO – GOLD

- FINAL PHASE 3 DRILLING RESULTS AND AIRBORNE MAGNETIC SURVEY COMPLETED BY SHELTERED OAK RESOURCES (OAK-V), SAGE JV PARTNER
- FALL 2008 FIVE DRILL HOLES COMPLETED, BEST RESULT 4.5M OF 6.43 G AU/T

PONY SPUR, NEVADA–GOLD

- LOCATED ADJACENT TO THE PONY CREEK PROPERTY OF GRANDVIEW GOLD (SOUTHERN CARLIN TREND) WHICH HAS AN INFERRED RESOURCE OF 1.4 MILLION OUNCES OF GOLD

• SUGARLOAF, NEVADA– MOLYBDENUM, GOLD

- ADJACENT TO MEXIVADA MINING'S MOLYBDENUM DISCOVERY IN LATE 2007

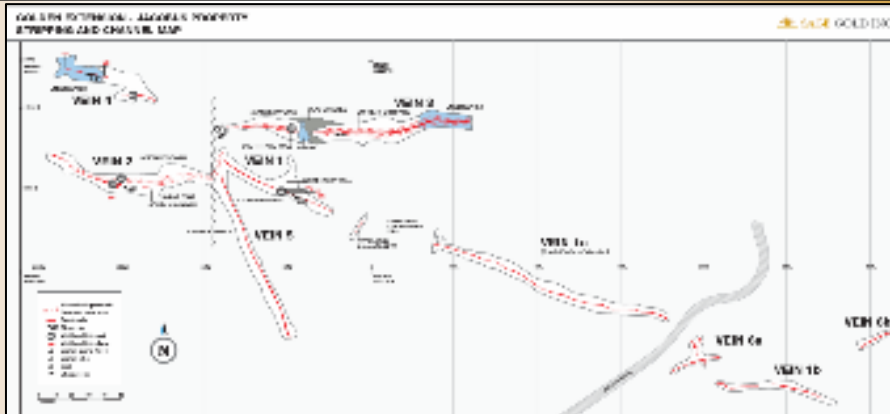


SAGE GOLD INC.

Precious Metals In The Americas

Company Fact Sheet

Jacobus Property



Head Office:
Suite 500 - 365 Bay Street
Toronto, Ontario
M5H 2V1
Canada

Phone: (416) 204-3170

email:

info@sagegoldinc.com

Website:

www.sagegoldinc.com

Directors/Executive Team:

Nigel Lees
President, CEO,
Director

Patrick Mars
Chairman and Director

William Love
Vice-President,
Business Development

Arthur Hampson
Chief Financial Officer

Joseph Baylis
Director

Gary Robertson
Director

Peter Bojtos
Director

Michael Skutezky
Secretary and Legal
Counsel

Mike O'Brien, Manager
Investor Relations

Transfer Agent:
Equity Transfer & Trust

Recent News

Sage Gold Inc.: 22.77 g Au/T Channel Result New Gold Veins-Paint Lake
Marketwire, 17/06/2009-08:00:45

Sage Gold Commences Drilling on Jacobus Golden Extension Discovery
Marketwire, 08/06/2009-08:00:25

Sage Gold Option Grant
Marketwire, 29/05/2009-07:00:03

Sage Gold and Consolidated Puma Announce Merger Agreement
Marketwire, 21/05/2009-08:00:46



The material contained in this publication is for information purposes only and does not constitute an offer to sell or buy any security. The information is from sources we believe to be reliable, but we do not guarantee it; errors and omissions are inevitable. It is not all-inclusive. Do not rely on it as the sole source of information for making decisions. For historical disclosure, refer to our website at www.sagegoldinc.com.