


**SAGE GOLD INC.**

Precious Metals In The Americas

# Company Fact Sheet

## WHY SAGE GOLD?

Symbol: SGX  
Exchange:  
TSX-V

52 week Hi-Lo  
\$0.16- 0.04

Historical High  
\$0.80  
(10/22/2007)

Shares  
Outstanding  
249.2 Million

Market  
Capitalization  
\$14.5 Million

For Investor  
Relations  
Contact:

AGORACOM  
Investor  
Relations

email:  
sgx@agoracom.com

Website:

www.sagegoldinc.com

- ❖ Highly experienced team in all areas of mining
- ❖ Focus on the active Beardmore – Geraldton Gold camp in NW Ontario
- ❖ Golden Extension Discovery on Jacobus property directly northwest and on strike with Kodiak Exploration's Golden Mile Discovery
- ❖ High Grade drill assays reported on Paint Lake and Pillars properties
- ❖ New Property Acquisitions in Fall '09; total land package 150K acres

## Properties

### JACOBUS, BEARDMORE – GOLDEN EXTENSION DISCOVERY

- 1.5 KM OF AGGREGATE STRIKE LENGTH OVER MULTIPLE GOLD BEARING VEINS
- TILL TESTING DRILL PROGRAM IN WINTER OF 2010
- STRIPPING, TRENCHING, SAMPLING AND PROSPECTING ONGOING IN 2009
- HIGHLIGHT CHANNEL SAMPLES – 259.99 G AU/T, 136.5 G AU/T, 93.72 G AU/T

### JACOBUS, BEARDMORE – COPPER, NICKEL

- HISTORICAL RESOURCE – 937,538 TONS AT 0.43% CU AND 0.41% NI

### ONAMAN, LYNX ZONE, BEARDMORE – GOLD, SILVER, COPPER, ZINC, LEAD

- NI 43-101 COMPLIANT RESOURCE ON LYNX ZONE ; INFERRED RESOURCE TO DATE
- 1,936,000 TONNES WITH AVG .GRADE OF 1.44% CU, 39.6 G AG/T , 0.58 G AU/T CONTAINING 61.3 MLBS COPPER, 2.24 MOZ.SILVER, 33,000 OZ. GOLD
- POTENTIAL TO EXPAND RESOURCE AND AMENABLE TO OPEN PIT MINING

### PAINT LAKE , BEARDMORE –GOLD

- STRIPPING AND TRENCHING WITH REPORTED HIGH GRADE CHANNEL SAMPLES
- HIGHLIGHT CHANNEL/ GRAB SAMPLES - 23.09 G AU/T OVER 0.40 M; 22.77 G AU/T
- ADJACENT TO ONTEX'S BROOKBANK GOLD DEPOSIT
- HIGHLIGHT DRILL ASSAY - 9.59 G AU/T OVER 1.65 METRES

### PILLARS , BEARDMORE –GOLD

- CHANNEL AND GRAB SAMPLES REPORTED IN SEPT '09 WITH 351.58 G AU/T OVER 1.28 METRES AND 154.09 G AU/T
- DRILL ASSAY REPORTED 5.75 G AU/T OVER 5.19 METRES INCLUDING 17.27 G AU/T OVER 0.99 METRES.

### NEW PROPERTY ACQUISITIONS IN OCTOBER 2009

- KING SOLOMON'S PILLARS (EAST), SPOONER, BEARSKIN LAKE, CROOKED GREEN CREEK, FINAL LAKE, VINCENT LAKE, CROOKED GREEN LAKE, CLIST LAKE, PAULOSKI, MISSING LINK EXTENSION, SOUTH RICKABY
- TOTAL LAND PACKAGE NOW 150,000 ACRES IN BEARDMORE-GERALDTON



**SAGE GOLD INC.**  
Precious Metals In The Americas

November 2009

# Company Fact Sheet

## Jacobus Property

**Head Office:**  
Suite 500 - 365 Bay Street  
Toronto, Ontario  
M5H 2V1  
Canada

Phone: (416) 204-3170

email:

info@sagegoldinc.com

Website:

www.sagegoldinc.com

**Directors/Executive Team:**

**Nigel Lees**  
President, CEO, Director

**Patrick Mars**  
Chairman and Director

**Peter Bojtos**- Director

**Geoffrey Gold**- Director

**Chris Westdal**- Director

**Gary Robertson**-  
Director

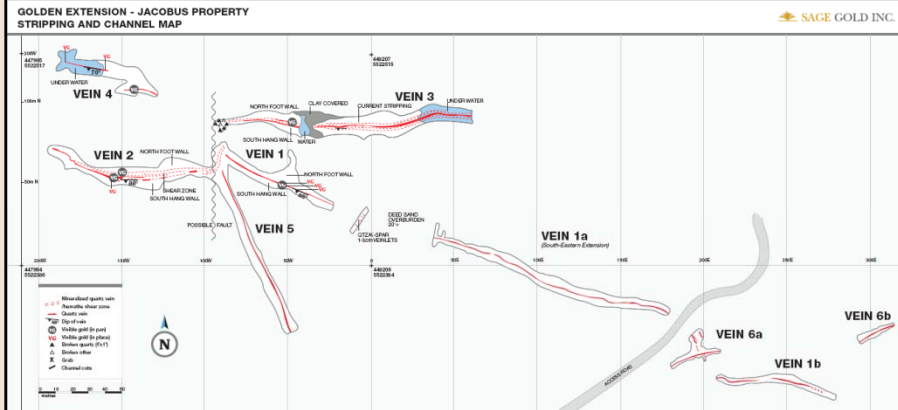
**William Love** - Vice  
President Business  
Development and Chief  
Geologist

**Arthur Hampson**- Chief  
Financial Officer

**Michael Skutezky** -  
Secretary and Legal  
Counsel

**Mike O'Brien**, Manager  
Investor Relations

**Transfer Agent:**  
Equity Transfer & Trust



## Recent News

**Sage Gold to Present at AGORACOM Online Gold and Commodities Conference- December 3-4, 2009**

Marketwire, 18/11/2009-11:39:14

**Sage Drills 5.75 g Au/t Over 5.19 Metres-Pillars**

Marketwire, 12/11/2009-11:14:17

**Sage Adds Strategic Properties in Beardmore**

Marketwire, 22/10/2009-02:00:23



*The material contained in this publication is for information purposes only and does not constitute an offer to sell or buy any security. The information is from sources we believe to be reliable, but we do not guarantee it; errors and omissions are inevitable. It is not all-inclusive. Do not rely on it as the sole source of information for making decisions. For historical disclosure, refer to our website at [www.sagegoldinc.com](http://www.sagegoldinc.com).*